

Critical Thinking Data AY06

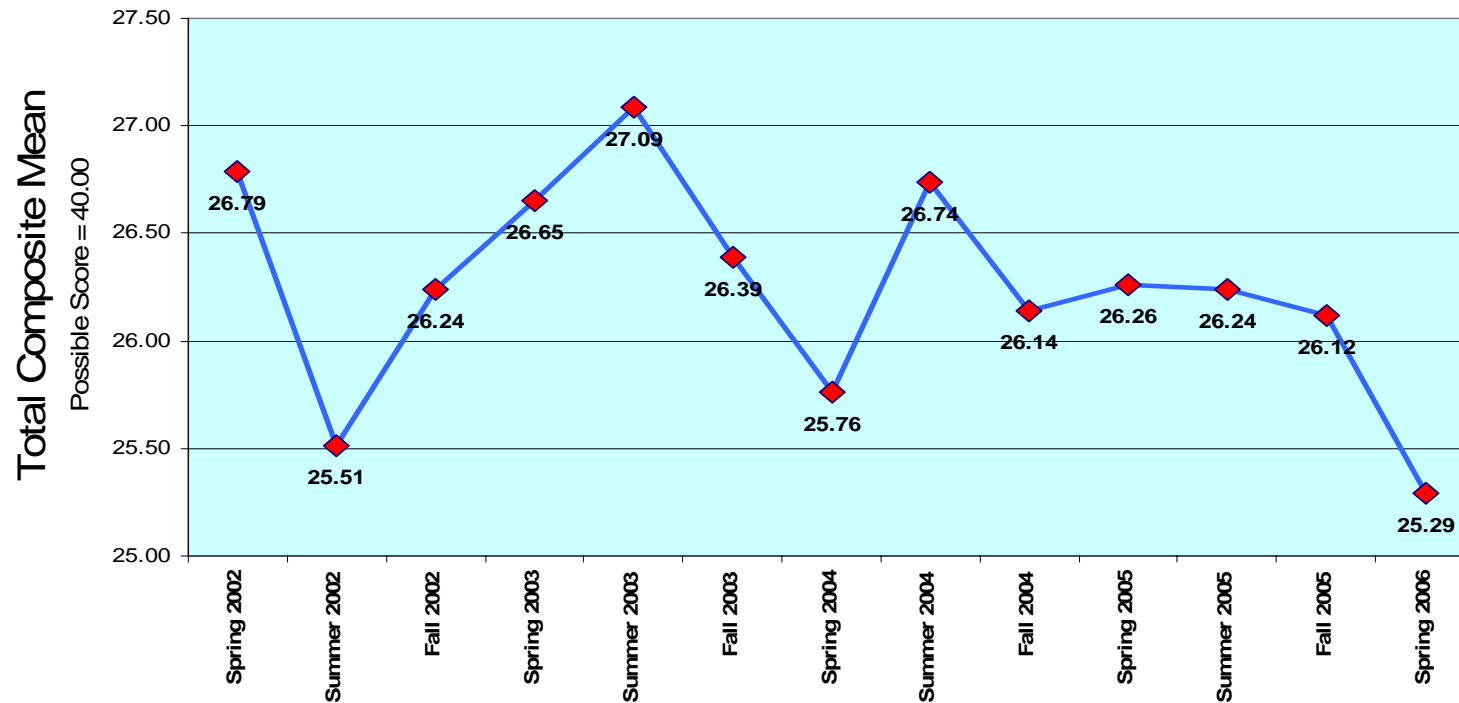
The Watson-Glaser Critical Thinking Appraisal is the assessment tool used to assess Eastern students' critical thinking abilities. It assess the following critical thinking skills: inference, recognition of assumptions, deduction, interpretation, and evaluations of arguments. This is a norm-referenced tool, but because we have been unable to identify other universities using this instrument, we are comparing our scores against each other by semester.

This appraisal is given to students enrolled in a Senior Seminar, so all students must have completed 75 hours to enroll in this course. The Appraisal is given in class during the 12th week of the semester or after an equivalent amount of time has elapsed in the summer semesters. It is given on the second weekend of the weekend seminars.

The following table offers the composite score for each semester.

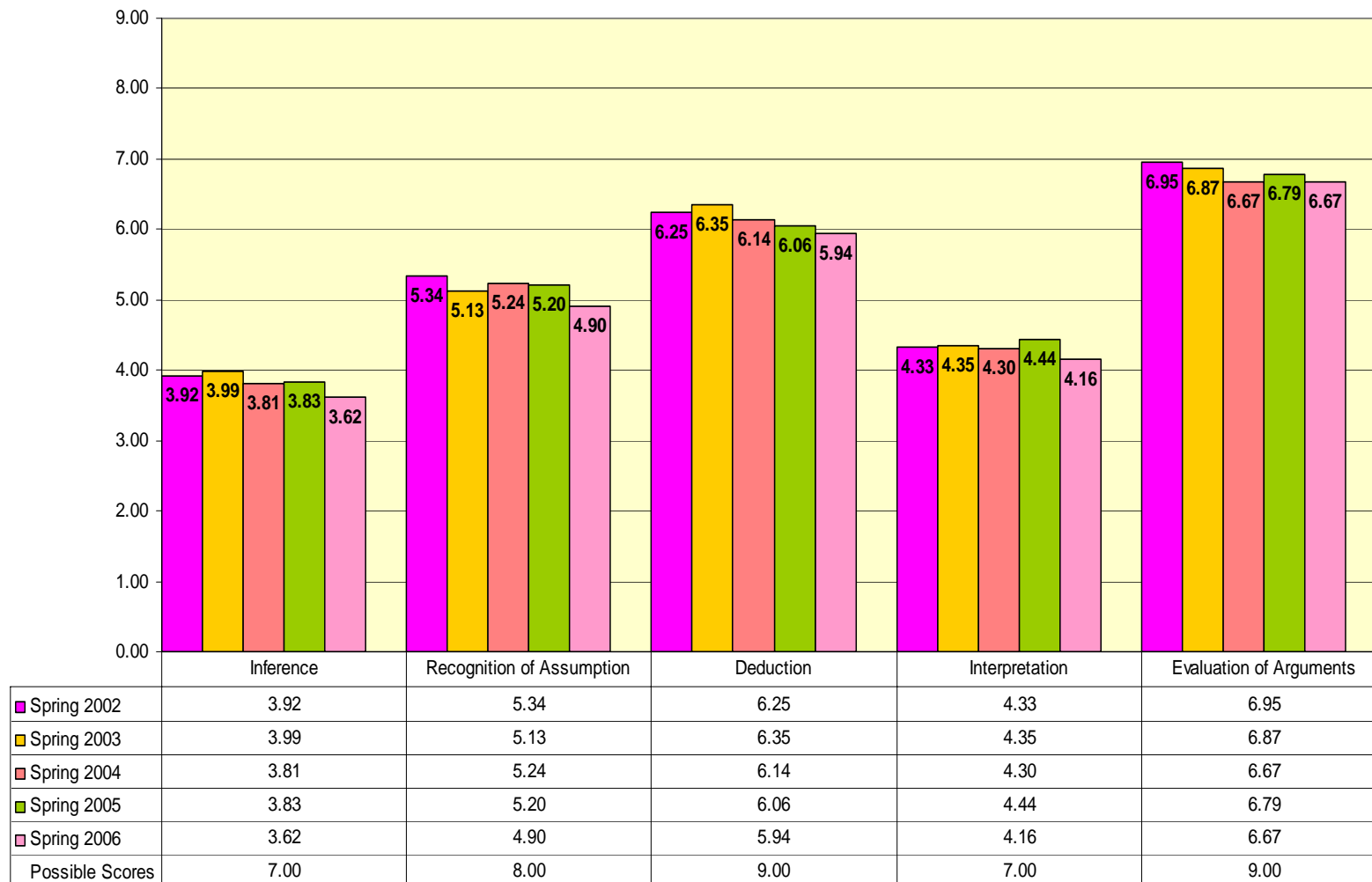
Watson Glaser

Total Composite Mean by Semester



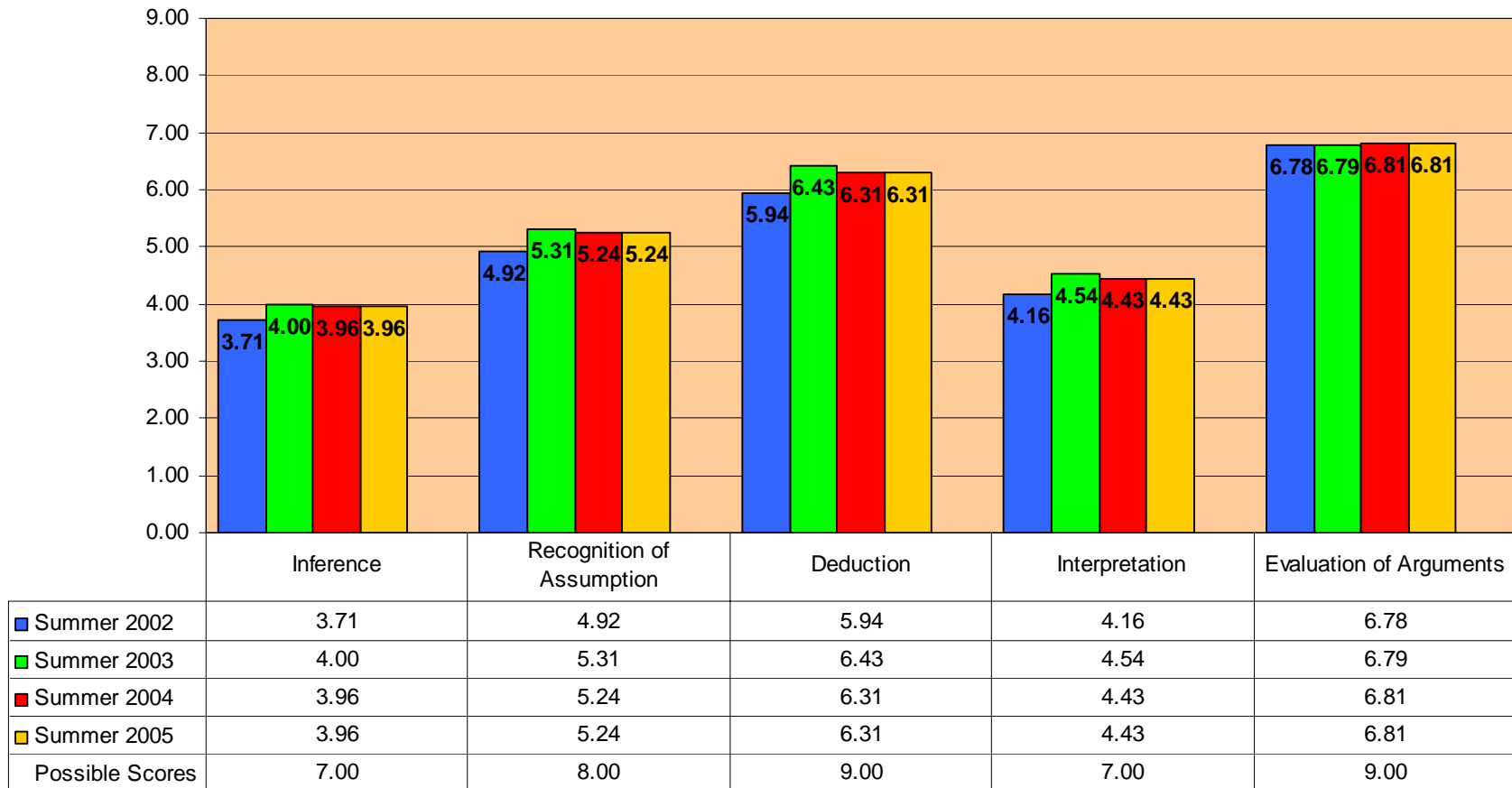
Watson Glaser Analysis

Comparison of All Spring Semesters



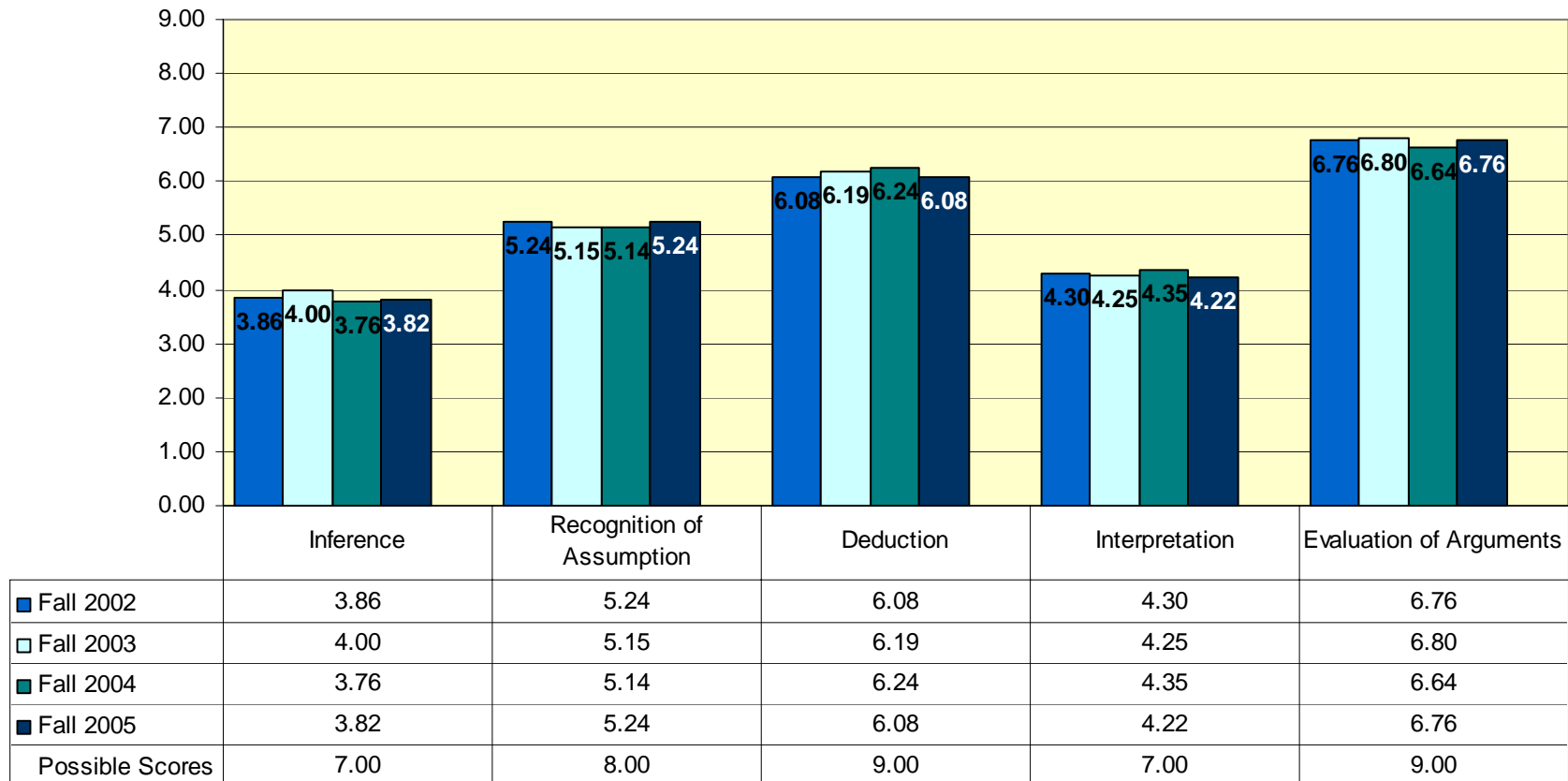
Watson Glaser Analysis

Comparison of All Summer Semesters



Watson Glaser Analysis

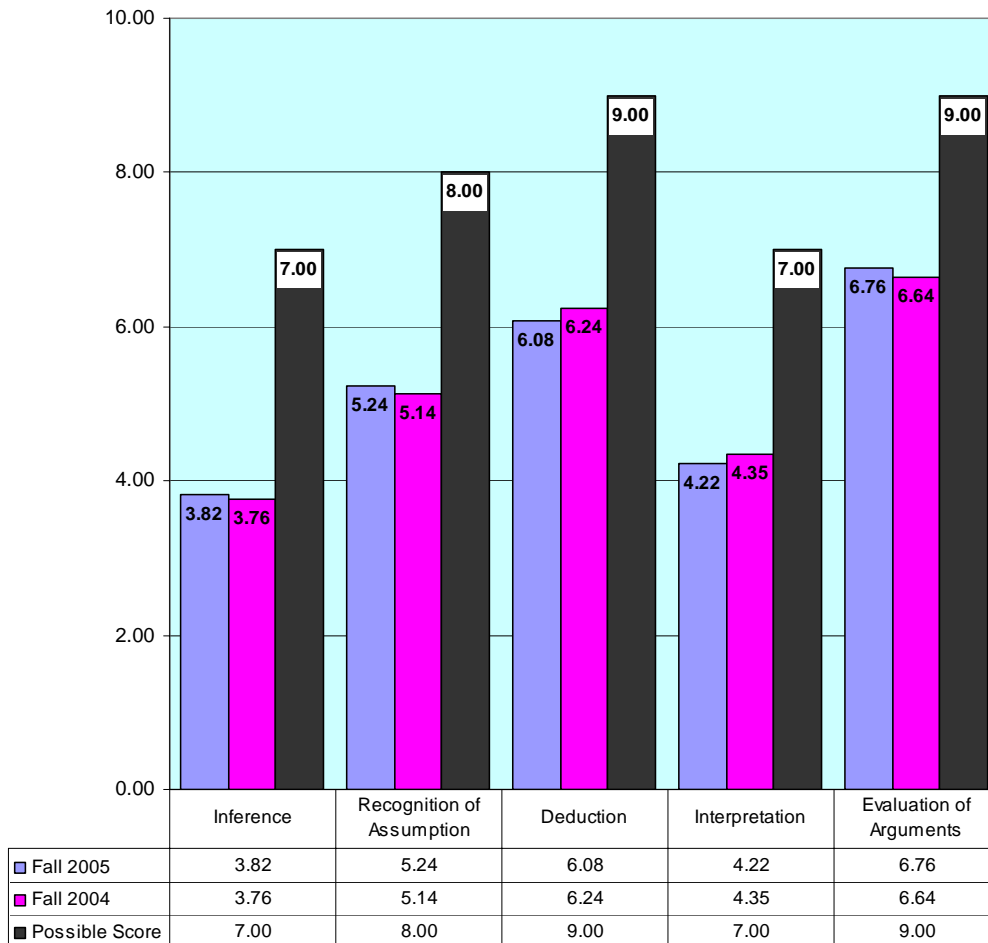
Comparison of All Fall Semesters



Since Eastern is using the short form of the Watson-Glaser Critical Thinking Appraisal, there are not enough questions asked for the subscores to be validated. We offer the following information with the caveat that the subscores data are not valid.

Watson-Glaser Analysis

Fall 2004 & Fall 2005 Comparison



Watson-Glaser Analysis

Spring 2005 & Spring 2006 Mean Score Comparison

